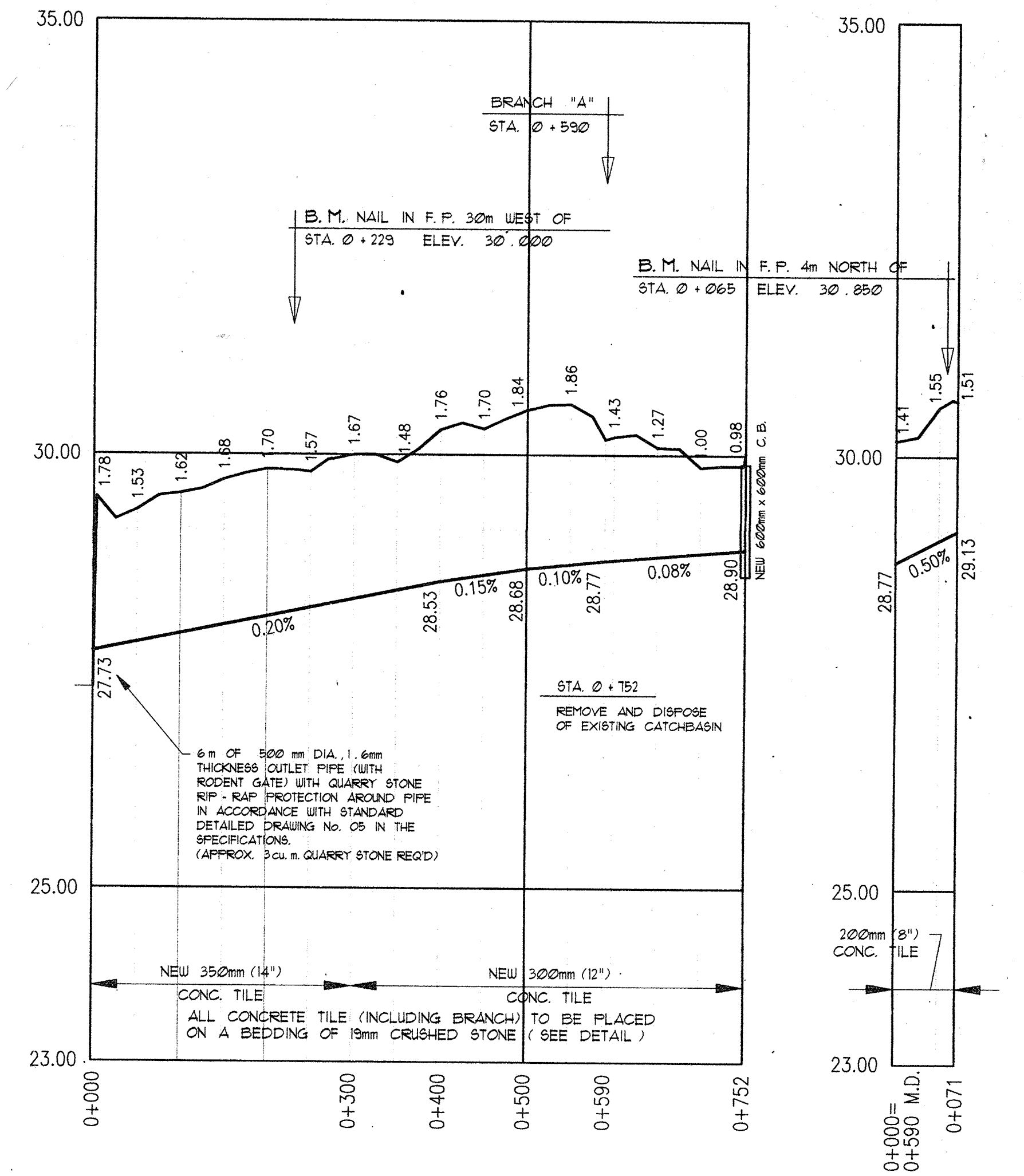


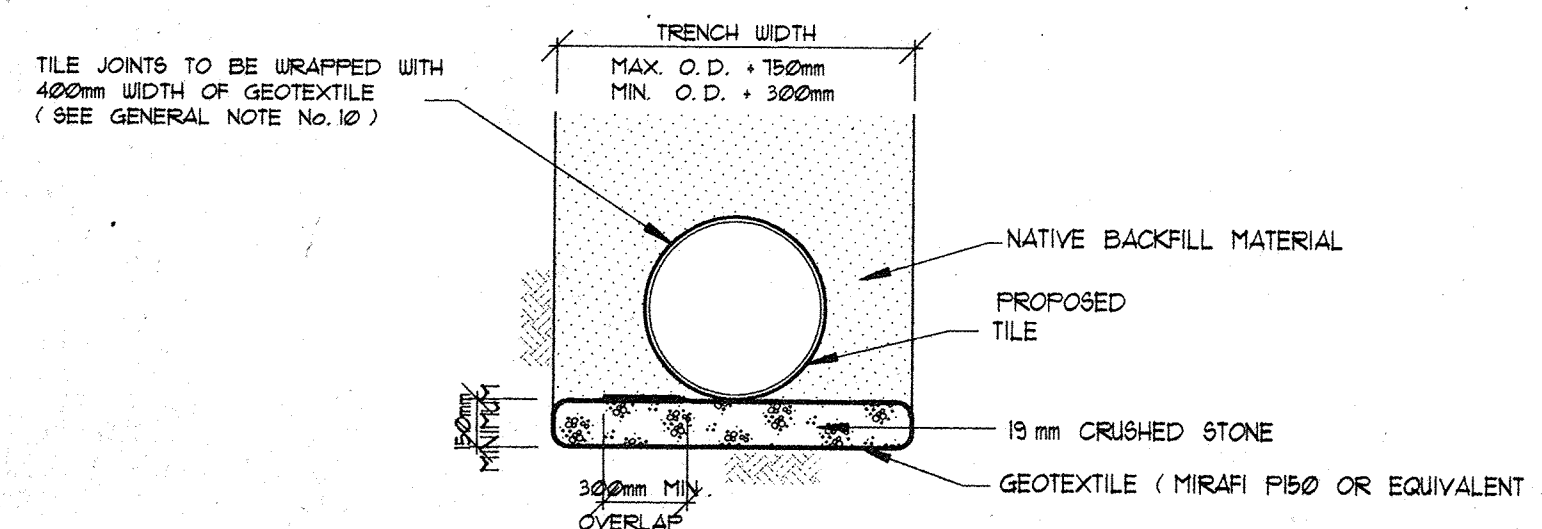
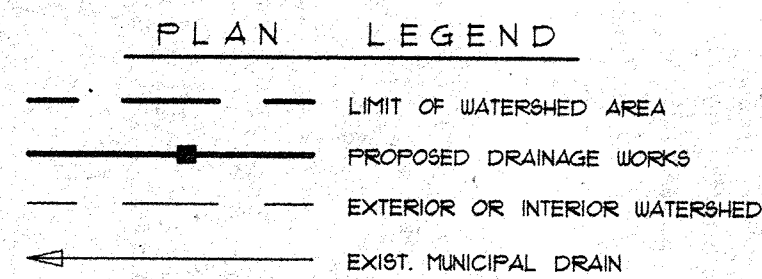
**GENERAL NOTES**

- 1/ OUR SPECIFICATIONS DATED JANUARY 1983 APPLY TO THIS PROJECT.
- 2/ THE WORKING WIDTH AVAILABLE TO THE CONTRACTOR TO CONSTRUCT THE DRAIN SHALL CONSIST OF THOSE LANDS IMMEDIATELY ADJACENT TO THE DRAIN AND CONNECTIONS AND SHALL NOT EXCEED AN AVERAGE WIDTH OF 15 METERS
- 3/ ALL OWNERS ALONG THE COURSE OF THE DRAIN SHALL MAKE AN ACCESS ROUTE FROM THE NEAREST ROAD TO THE DRAIN LOCATION AVAILABLE TO THE CONTRACTOR. THE AVERAGE WIDTH OF THIS ROUTE SHALL NOT EXCEED 8 METERS.
- 4/ CONTRACTOR TO VERIFY EXACT LOCATION AND ELEVATION OF ALL UTILITIES PRIOR TO CONSTRUCTION.
- 5/ QUARRY STONE SHALL RANGE IN SIZE FROM 100mm TO 300mm EVENLY DISTRIBUTED AND SHALL BE PLACED TO A 300mm THICKNESS ON A SUITABLE FILTER BLANKET AT A 1.5 : 1 SLOPE UNLESS OTHERWISE NOTED.
- 6/ a) EXACT LOCATION AND ELEVATIONS OF NEW CATCH BASINS TO BE CONFIRMED BY ENGINEER OR DRAINAGE SUPERINTENDENT.  
b) CATCHBASINS TO HAVE "BIRD CAGE" TYPE GRATES.
- 7/ EXACT LOCATION OF NEW TILE DRAINS TO BE CONFIRMED BY DRAINAGE SUPERINTENDENT OR ENGINEER PRIOR TO CONSTRUCTION.
- 8/ NEW CONCRETE DRAINS TO BE INSTALLED ON A BEDDING OF 19mm CRUSHED (50MM MINIMUM THICKNESS) CRUSHED STONE TO BE COMPLETELY WRAPPED IN GEOTEXTILE SUCH AS "MIRAFI F150" OR EQUIVALENT. (SEE DETAIL)
- 9/ ALL JOINTS BETWEEN CONCRETE TILES, AND CONCRETE TILE & VARIOUS PIPES, ARE TO BE SECURELY AND COMPLETELY WRAPPED WITH A 450mm WIDTH OF GEOTEXTILE SUCH AS "MIRAFI F150" OR EQUIVALENT. THE ENDS OF THE WRAP AT EACH JOINT SHALL OVERLAP A MINIMUM OF 150mm.
- 10/ CLEARING REQUIRED FROM STA. 0+685 TO STA. 0+752. ALL TREES, SCRUB, BRUSH, ETC. TO BE CLEARED AND GRUBBED IN ACCORDANCE WITH SPECIFICATIONS.



**MAIN DRAIN PROFILE**

**BR "A"**



**CRUSHED STONE BEDDING DETAIL**

N.T.S.

Drainage Superintendent: JOHN UNGAR

**WELLMAN BRANCH OF THE STALEY DRAIN**  
TOWNSHIP OF MALAHIDE

Drawn By: MPD	Approved By: B-112	JOB No. 93221	Drawing No. 1 of 1
Date: MAY 13, 1994			

PLAN & PROFILE

**SPRIET ASSOCIATES LIMITED**  
LONDON CONSULTING ENGINEERS  
722 YORK STREET - LONDON (519) 672-4100 - 415W 258