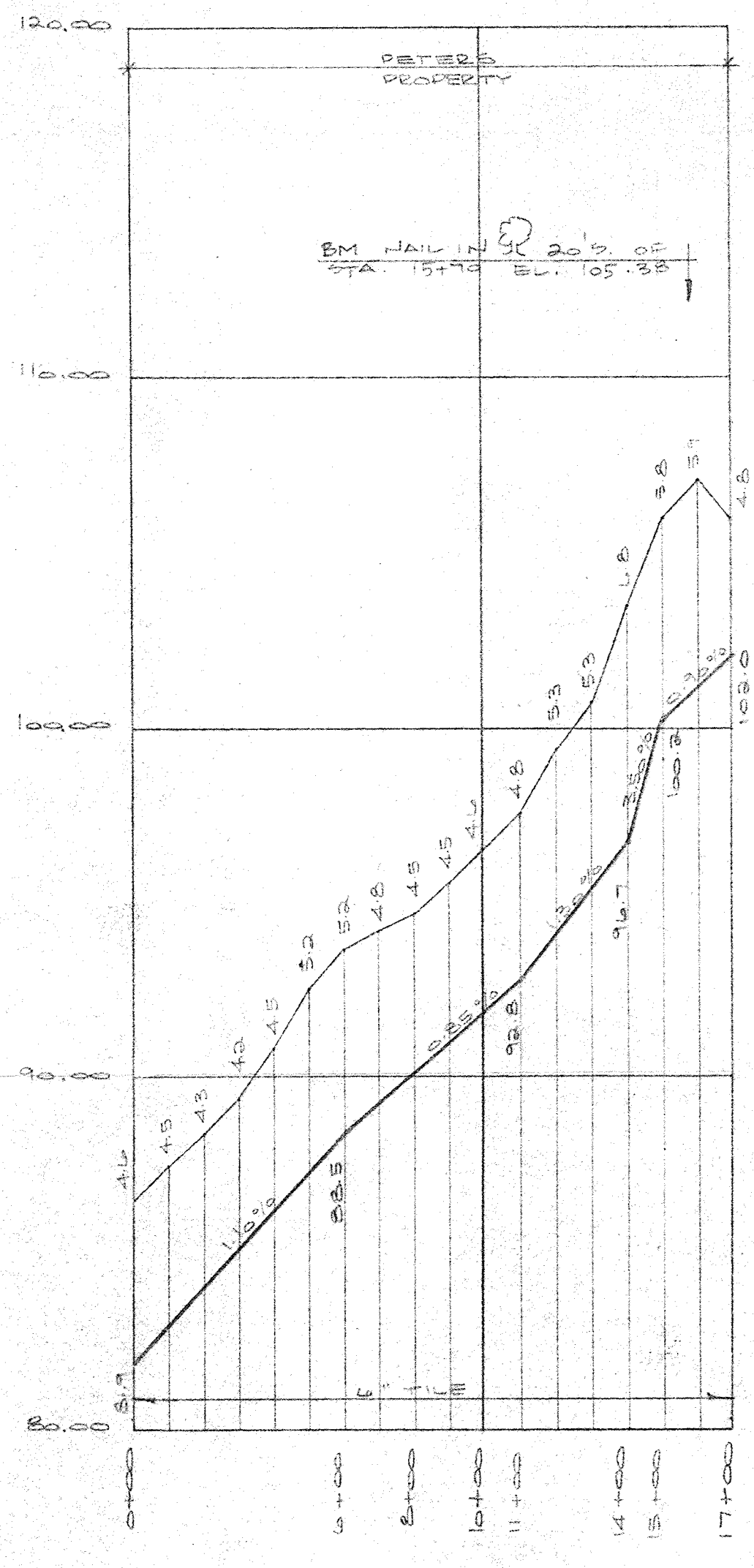
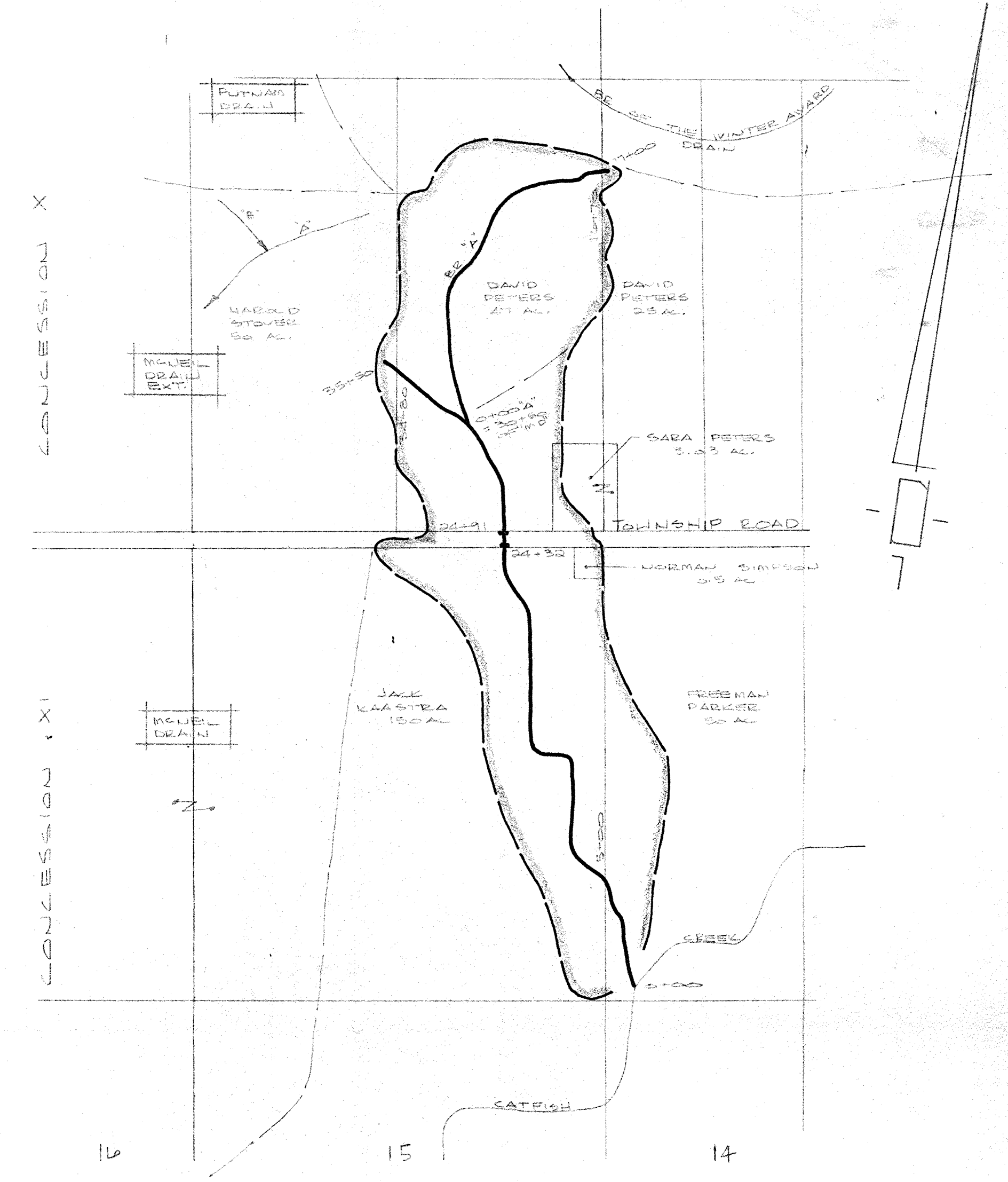


MAIN DRAIN PROFILE
SCALE HOR. 1" = 400'
VERT. 1" = 4'-0"

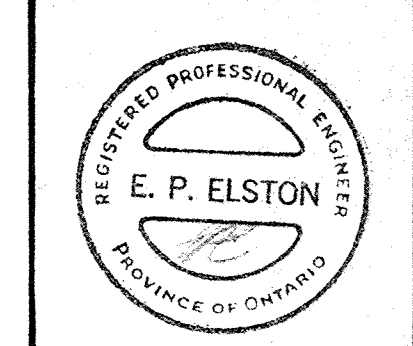


BRANCH "A"



PLAN SCALE 1" = 500'

- GENERAL NOTES**
1. NEW TILE DRAIN TO BE ON WEST SIDE OF EXISTING TILE FROM STA. 24+50 TO STA. 24+55. AND ON EAST SIDE FROM STA. 24+55 TO STA. 24+58. EXACT LOCATION TO BE VERIFIED BY COMMISSIONER.
 2. EXISTING VALLEY FROM STA. 15+30 TO STA. 17+00 AND BRUSHED AREAS ON KAASTRA PROPERTY TO BE BACKFILLED AND GRADED.
 3. NEW 24" APPROVED CATCHBASIN TO BE MFC TYPE DO-70-1-A WITH FRAME AND GRATE TO BE MFC TYPE DO-70-1-A OR APPROVED EQUALS.
 4. NEW 24" DISCHARGE CATCHBASIN TO BE MFC TYPE DO-70-1-A WITH FRAME AND GRATE TO BE MFC TYPE DO-70 OR APPROVED EQUALS. DIB TO HAVE SAND AND VET CONCRETE BERM AROUND DOWNSTREAM SIDE.
 5. ELEVATIONS OF NEW CATCHBASINS TO BE VERIFIED BY ROAD SUPERVISOR AND BULLHESS.
 6. EXISTING TILE DRAIN TO BE ABANDONED.



KAASTRA DRAIN			
TOWNSHIP OF SOUTH DORCHESTER			
Scale: AS SHOWN	Approved By: F. B. D-85	JOB NO. 7 7 2 6 0	Drawn By: E.P.A.J.
Date: SEPT. 11, 1978			Revised:
PLAN & PROFILES			
SPRIET ASSOCIATES		LONDON	Drawing Number
CONSULTING ENGINEERS		SUBURBY	1