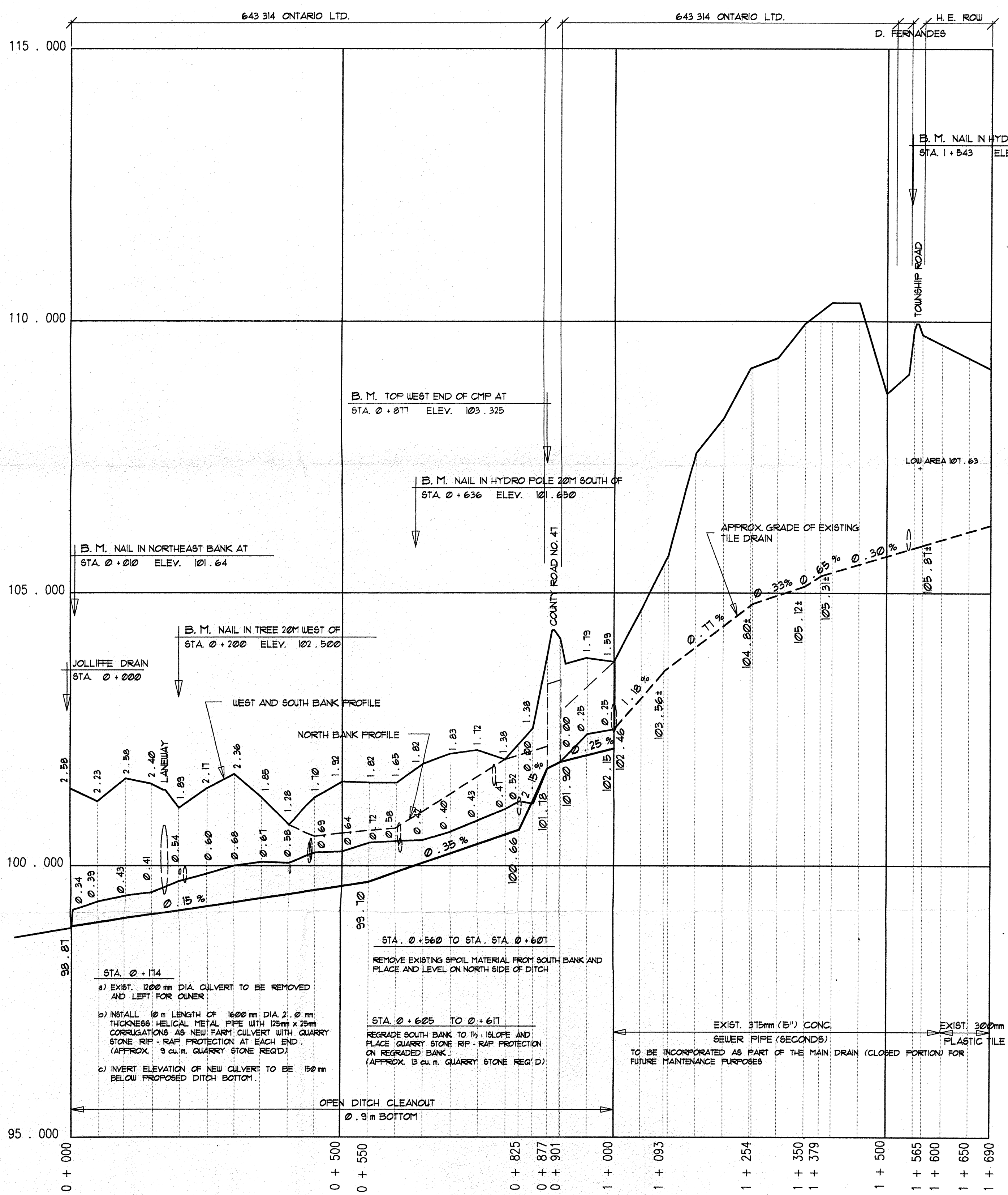
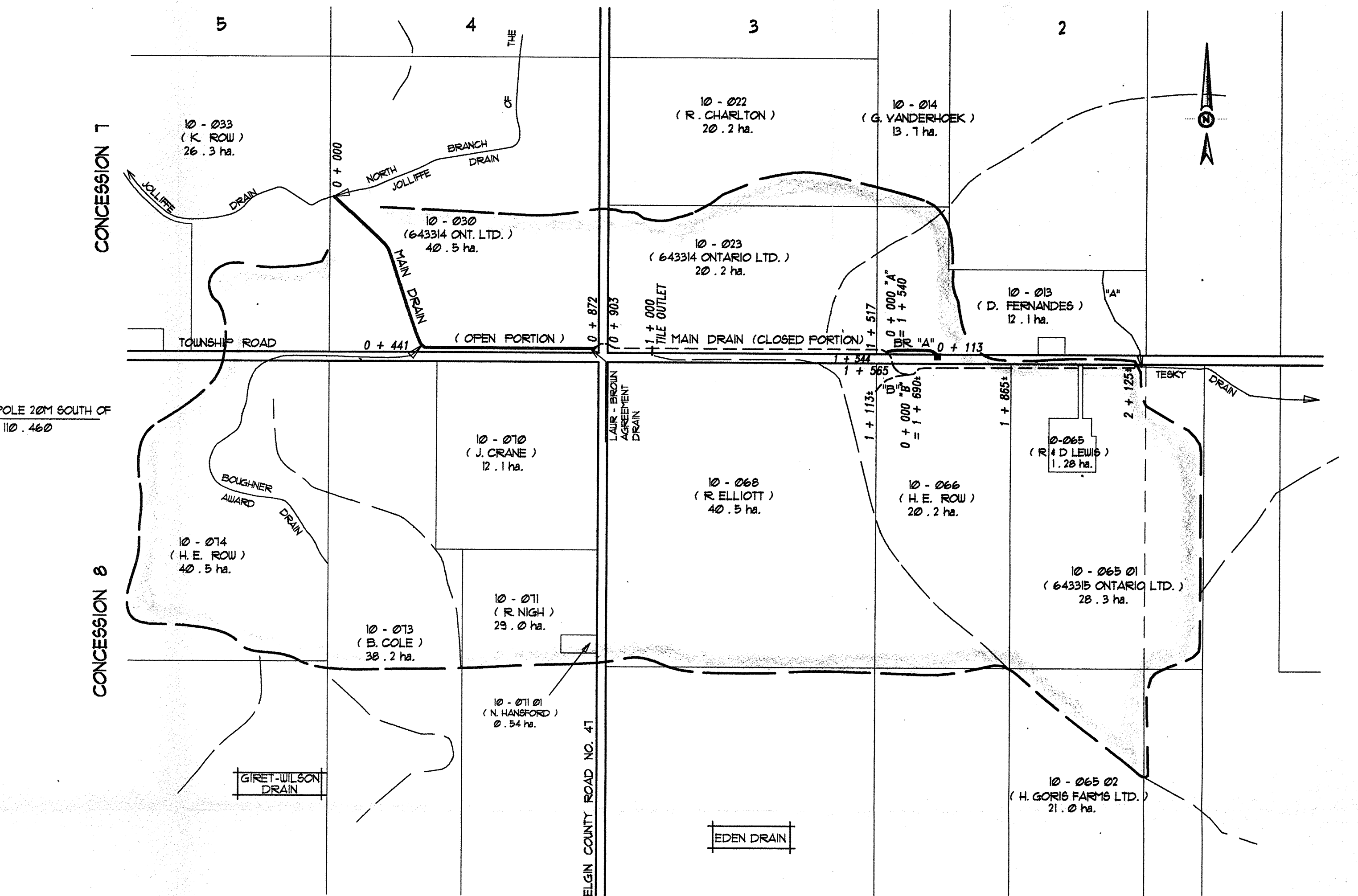


**APPROXIMATE QUANTITIES**

EXCAVATION	900 cu. m.
SEEDING	2800 sq. m.
QUARRY STONE	22 cu. m.
FILTER BLANKET	15 sq. m.



**MAIN DRAIN PROFILE**  
SCALE: HOR 1:5000  
VERT. 1:50



**PLAN SCALE 1: 1500**

**GENERAL NOTES**

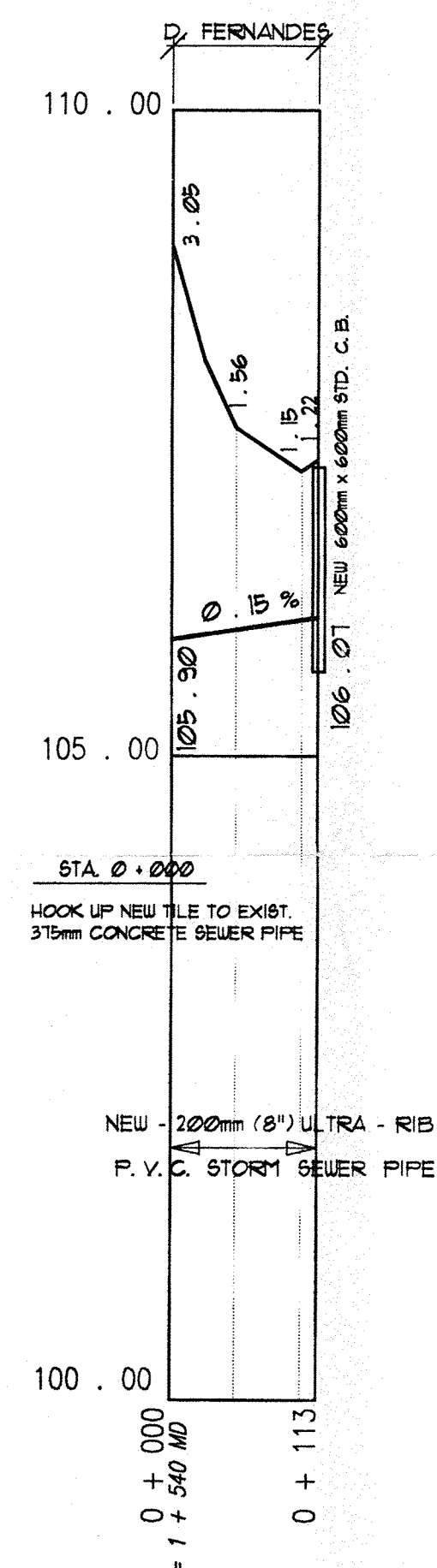
- OUR SPECIFICATIONS DATED JANUARY 1983 APPLY TO THIS PROJECT.
- THE WORKING WIDTH AVAILABLE TO THE CONTRACTOR TO CONSTRUCT THE DRAIN SHALL CONSIST OF THOSE LANDS IMMEDIATELY ADJACENT TO THE DRAIN AND CONNECTIONS AND SHALL NOT EXCEED AN AVERAGE WIDTH OF 15 METERS.
- ALL OWNERS ALONG THE COURSE OF THE DRAIN SHALL MAKE AN ACCESS ROUTE FROM THE NEAREST ROAD TO THE DRAIN LOCATION AVAILABLE TO THE CONTRACTOR. THE AVERAGE WIDTH OF THIS ROUTE SHALL NOT EXCEED 8 METERS.
- CONTRACTOR TO VERIFY EXACT LOCATION AND ELEVATION OF ALL UTILITIES PRIOR TO CONSTRUCTION.
- ALL TREES, SCRUB, BRUSH, ETC. TO BE CLEARED AND GRUBBED IN ACCORDANCE WITH SPECIFICATIONS.
- QUARRY STONE SHALL RANGE IN SIZE FROM 100mm TO 300mm EVENLY DISTRIBUTED AND SHALL BE PLACED TO A 300mm THICKNESS ON A SUITABLE FILTER BLANKET.
- "CAUTION" TO BE TAKEN WHEN CLEANING THROUGH EXISTING FARM AND ROAD CULVERTS.

**CLOSED PORTION**

- EXACT LOCATION OF NEW TILE DRAINS TO BE CONFIRMED BY DRAINAGE SUPERINTENDENT OR ENGINEER PRIOR TO CONSTRUCTION.
- EXACT LOCATION AND ELEVATIONS OF NEW CATCH BASINS TO BE CONFIRMED BY ENGINEER OR DRAINAGE SUPERINTENDENT.
  - CATCH BASINS TO HAVE "BIRD CAGE" TYPE GRATES.
  - ROAD DITCH TO BE GRADED TO NEW CATCHBASIN FOR 15m EACH WAY OF NEW CATCHBASIN.
- EXISTING 315mm (12") SEWER PIPE FROM STA. 1+000 TO STA. 1+600 AND EXIST. 300mm (12") FLASTIC TILE FROM 1+600 TO STA. 1+630 ARE TO BE INCORPORATED AS PART OF MAIN DRAIN FOR FUTURE MAINTENANCE PURPOSES.
  - A RIGHT-OF-WAY NOT EXCEEDING 15 METERS SHALL ACCOMPANY THE INCORPORATED DRAINS FOR FUTURE MAINTENANCE PURPOSES.
  - THE EXISTING 250mm (10") TILE FROM STA. 1+630 TO STA. 2+125 (FORMERLY PART OF THE TESKY DRAIN) IS TO BE INCLUDED AS PART OF MAIN DRAIN FOR FUTURE MAINTENANCE PURPOSES.
  - THE EXISTING 200mm (8") TILE FROM STA. 0+000 TO STA. 0+113 (BR. "B") FORMERLY PART OF THE TESKY DRAIN IS TO BE INCLUDED AS BRANCH "B" OF THIS DRAIN FOR FUTURE MAINTENANCE PURPOSES.

**OPEN PORTION**

- EXISTING DITCH BOTTOM ONLY TO BE CLEANED OUT IN ACCORDANCE WITH THE SPECIFICATIONS.
- A 2 METER WIDE BUFFER STRIP IS TO BE TO BE CREATED AND MAINTAINED BETWEEN THE TOP OF THE BANK AND THE CULTIVATED LANDS ON BOTH SIDES OF THE DITCH.
- STATIONS 0+450 TO 0+920 CONSTRUCT SEDIMENT BASINS IN DITCH BOTTOM. SEDIMENT BASINS TO EXTEND FOR FULL WIDTH OF DITCH BOTTOM AND BE 600mm DEEP x 15m LONG.
- EXCAVATED MATERIAL TO BE DEPOSITED AND LEVELLED ON THE FOLLOWING SIDES OF THE DITCH:
  - STA. 0+000 TO STA. 0+115 - ON NORTH EAST SIDE
  - STA. 0+115 TO STA. 0+441 - ON WEST SIDE
  - STA. 0+441 TO STA. 1+000 - ON NORTH SIDE
- THE PORTION OF THE EXISTING DITCH BANKS BELOW THE EXISTING DITCH BOTTOM AND ANY PORTION OF THE BANKS DISTURBED BY CONSTRUCTION ARE TO BE SEEDED WITH AN APPROVED GRASS SEED MIXTURE.
- NEW DITCH BANKS AND BUFFER STRIPS TO BE HAND SEEDED DAILY OR HYDRO SEEDED UPON COMPLETION OF CONSTRUCTION USING THE FOLLOWING GRASS SEED MIXTURE AT A RATE OF 65 Kg/ha: (CREETING RED FESCUE 40%, KENTUCKY BLUEGRASS 20%, RED TOP 10%, TIMOTHY 10%, LADINO 10%)
- ALL FARM CULVERTS ARE TO BE INSTALLED IN ACCORDANCE WITH STANDARD DETAIL DRAWING NO. 02 IN THE SPECIFICATIONS WITH EXCEPTION THAT BACKFILL MATERIAL IS TO BE GRANULAR "B". ALSO, WHERE RIP-RAP IS TO BE QUARRY STONE IT SHALL BE INSTALLED AS NOTED IN 2/b) BELOW
  - RIP-RAP FOR FARM CULVERTS SHALL BE PLACED AT A 1:1 SLOPE AND SHALL EXTEND FROM TOP OF LANEWAY TO 600mm BELOW PIPE AND 600mm INTO UNDISTURBED SOIL ON EACH SIDE.



**BRANCH "A"**

<b>SOUTH BRANCH OF JOLLIFFE DRAIN</b>			
TOWNSHIP OF SOUTH DORCHESTER			
Scale: AS SHOWN	Field Book No.	JOB NO.	Drawn By: FB
Date: AUG. 26, 1991	D - 157	91019	Revised:
<b>PLAN &amp; PROFILE</b>			
<b>SPRIET ASSOCIATES</b>		LONDON	Drawing Number
CONSULTING ENGINEERS		SUBURBY	1 of 1