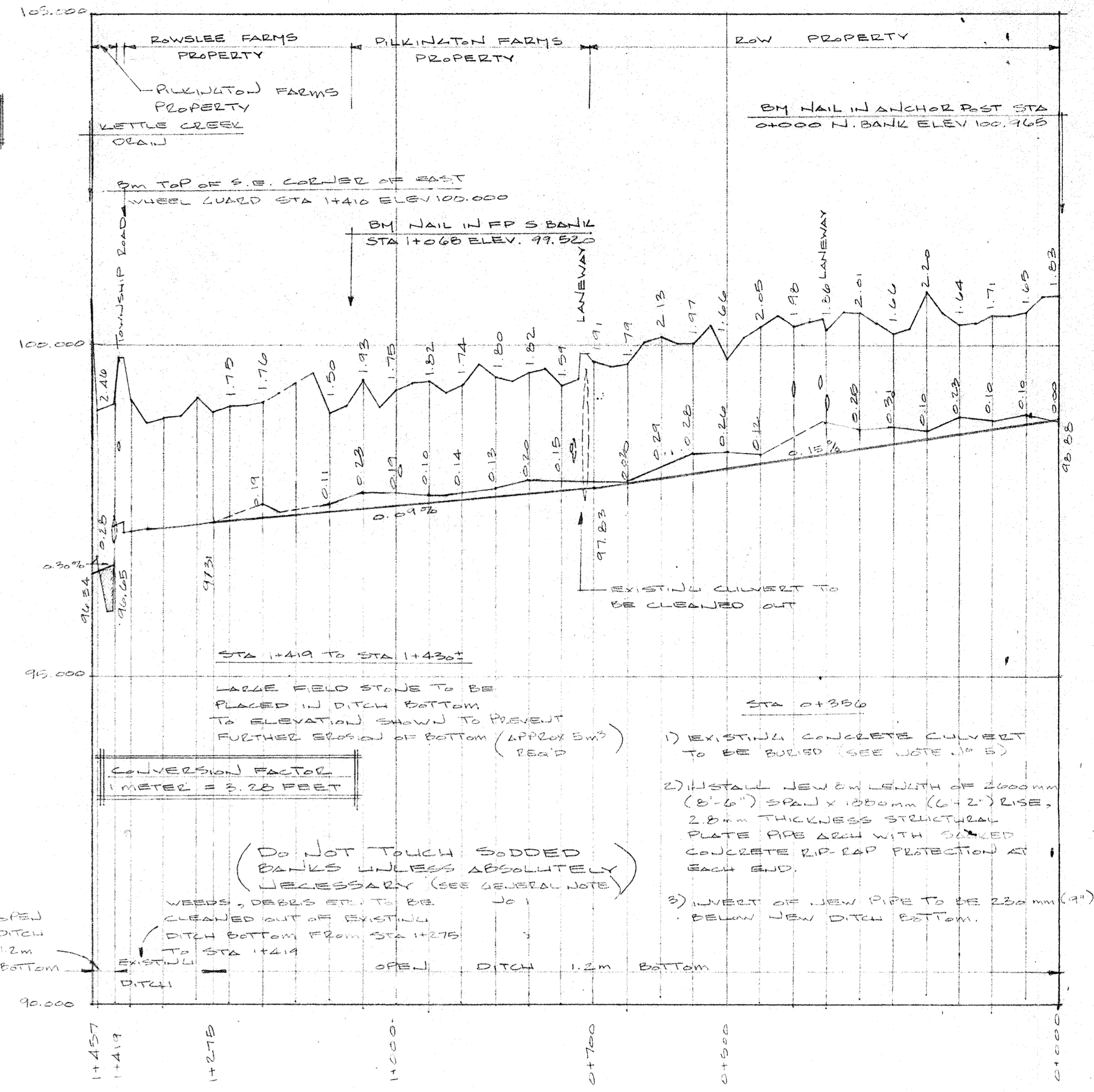
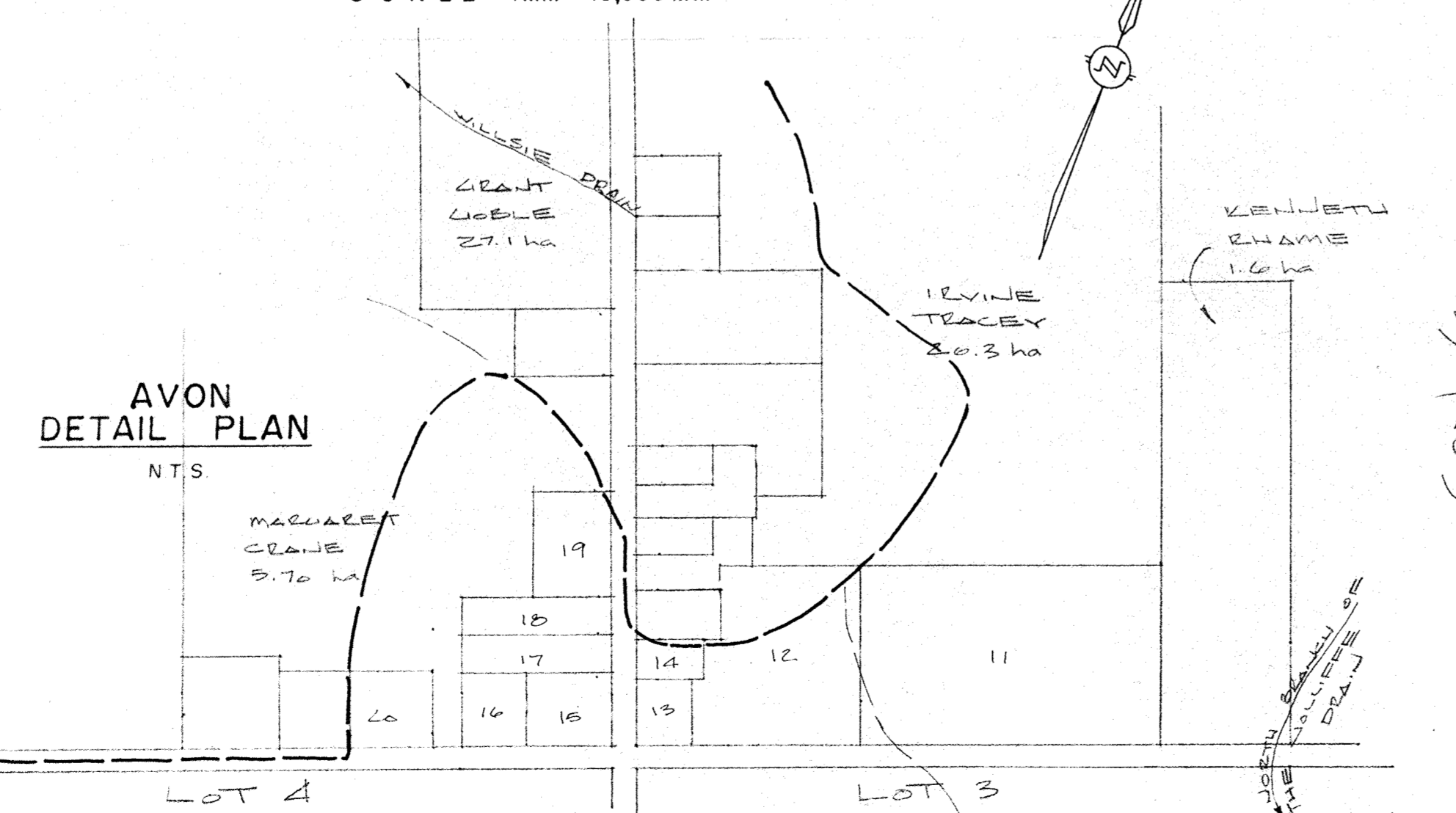


- KEY**
- 1 SUSAN STEVENS 0.14 ha
 - 2 JUDITH FARROW 0.26 ha
 - 3 BELVA DE GREAT 0.20 ha
 - 4 THOMAS WIDDE 0.20 ha
 - 5 GREAT HANFORD 0.11 ha
 - 6 AVON MILLING CO 0.28 ha
 - 7 MOLLEY DAVID 0.21 ha
 - 8 GEORGE JOHNSON 0.09 ha
 - 9 JAMES HOYLE 0.20 ha
 - 10 LORNE DALE 0.08 ha
 - 11 TWP. OF NORTH DORCHESTER 1.26 ha
 - 12 HELEN STRATTON 0.30 ha
 - 13 GEORGE CROSS 0.12 ha
 - 14 GEORGE STRATTON 0.28 ha
 - 15 CHARLES HAYLE 0.17 ha
 - 16 EDGAR HOUSE 0.12 ha
 - 17 PLESTON FARMS 0.19 ha
 - 18 BERNARD LAWRENCE 0.16 ha
 - 19 JOHN JOHNSON 0.21 ha
 - 20 MERVIN MONTYEE 0.18 ha



- GENERAL NOTES**
- 1) EXISTING DITCH BOTTOM ONLY TO BE CLEANED OUT AND SODDED BANKS ARE NOT TO BE TOUCHED. WHERE THE EXISTING BANKS HAVE COLLAPSED, ARE UNSTABLE OR MAY BECOME UNSTABLE BECAUSE OF CONSTRUCTION, NEW BANKS ARE THEN TO BE CONSTRUCTED WITH 1 1/2:1 SLOPES.
 - 2) EXCAVATED MATERIAL TO BE DEPOSITED AND LEVELLED AS FOLLOWS:
 - I STA 0106 TO STA 0108 - ON NORTH SIDE OF DITCH
 - II STA 0108 TO STA 1108 - ON NORTH SIDE OF DITCH
 - III STA 1108 TO STA 1121 - ON NORTH SIDE OF DITCH
 - IV STA 1142 TO STA 11457 - ON SOUTH SIDE OF DITCH
 NOTE: CLEAR ONLY SUFFICIENT BRUSH TO PERMIT LEVELLING OF MATERIAL FROM STA 0106 TO STA 1108
 - 3) ALL TREES, BRUSH, SCRUB, ETC. TO BE CUT AND REMOVED FROM BOTH BANKS AND EXISTING DITCH BOTTOM FOR LENGTH OF DEED, AND RIELED. (NO WINDROWING WILL BE PERMITTED)
 - 4) CONTRACTOR TO INVESTIGATE LOCATION AND ELEVATIONS OF ALL UTILITIES PRIOR TO CONSTRUCTION
 - 5) TOPSOIL TO BE STRIPPED FROM AREA WHERE CULVERT TO BE BURIED AND REPLACED & RELEVELLED OVER AREA UPON COMPLETION OF WORK MINIMUM 14m (45') OF COVER TO BE PROVIDED OVER BURIED CONCRETE

	JOLLIFFE DRAIN			
	TOWNSHIP OF SOUTH DORCHESTER			
	Scale AS SHOWN	Approved By: FB - D-94	JOB NO. 029259	Drawn By: A. F. D.
Date: MAR 20/80			Revised:	
PLAN, PROFILE & DETAIL				
SPRIET ASSOCIATES CONSULTING ENGINEERS		LONDON SUDBURY	Drawing Number 1	