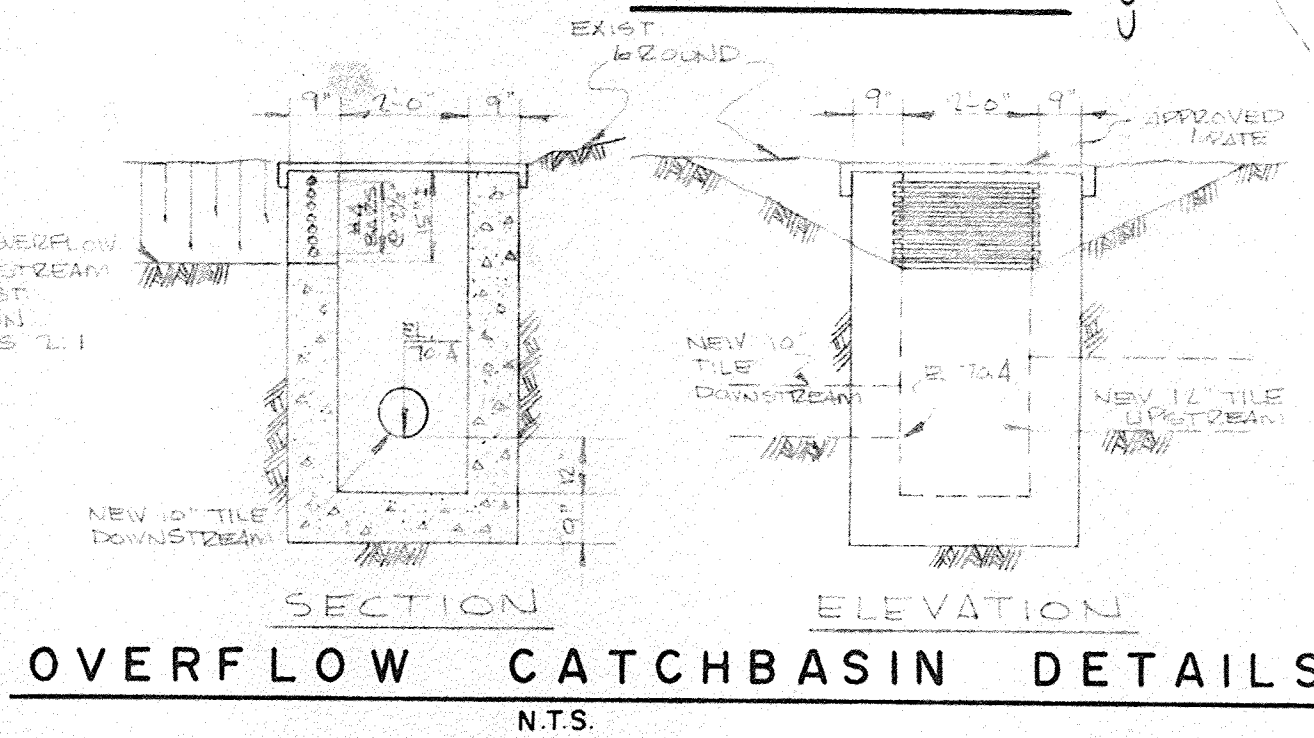
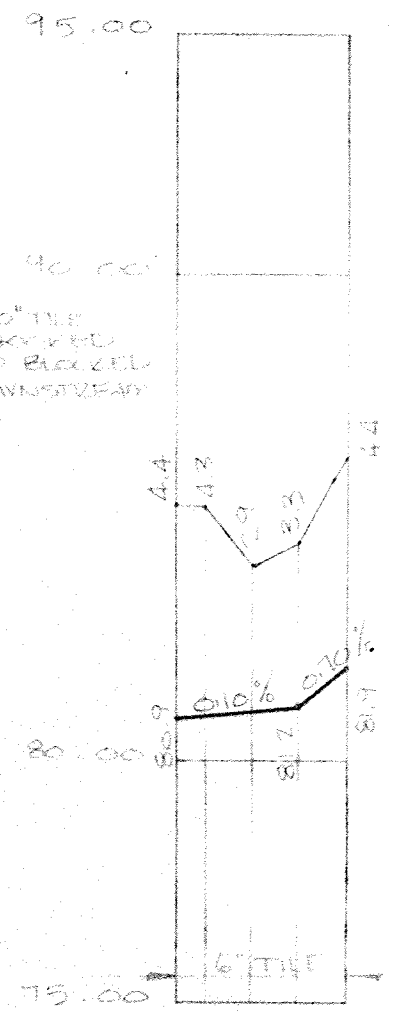


**MAIN DRAIN PROFILE**  
SCALE HOR. 1" = 400'  
VERT. 1" = 4'-0"



**OVERFLOW CATCHBASIN DETAILS**  
N.T.S.



**BRANCH "E"**

**DETAIL "A"**  
N.T.S.

- GENERAL NOTES**
- EXIST 10" TILE TO BE EXPOSED AT STA. 0+00 AND STA. 23+95 PRIOR TO CONSTRUCTION SO THAT ELEVATIONS CAN BE VERIFIED BY ENGINEER.
  - NEW WOODEN WIDE FENCE AT STA. 28+95 NOT TO BE SET.
  - EXIST 10" TILE DRAIN FROM STA. 10+00 TO STA. 28+95 TO BE ABANDONED.

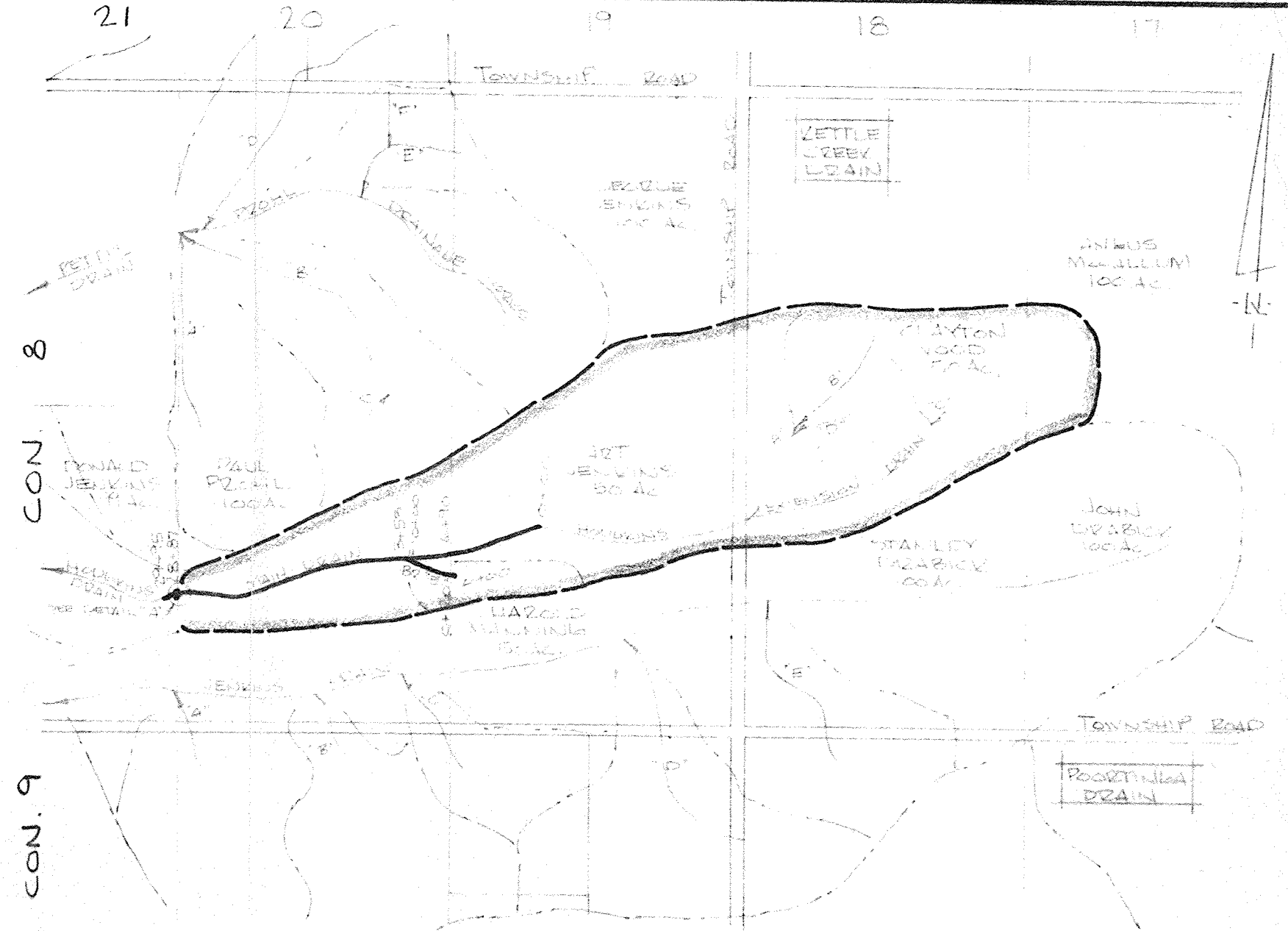
NEW OVERFLOW CATCHBASIN  
CONSTRUCT SHALLOW OVERFLOW DITCH  
EXIST 10" TILE TO BE RELOCATED OUT OF SURFACE RUN WITH NEW 10" TILE AT PRESCRIBED GRADE.

CON. 8  
5/2 LOT 21

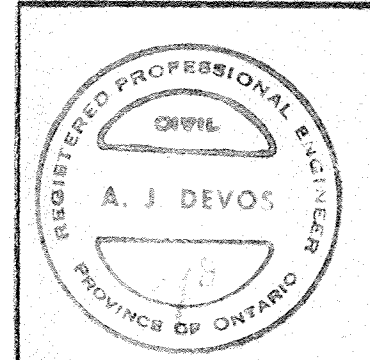
CON. 8  
3/4 LOT 20

**GENERAL NOTES**

- EXIST 10" TILE TO BE EXPOSED AT STA. 0+00 AND STA. 23+95 PRIOR TO CONSTRUCTION SO THAT ELEVATIONS CAN BE VERIFIED BY ENGINEER.
- NEW WOODEN WIDE FENCE AT STA. 28+95 NOT TO BE SET.
- EXIST 10" TILE DRAIN FROM STA. 10+00 TO STA. 28+95 TO BE ABANDONED.



**PLAN SCALE 1" = 1000'**



HODGKINS EXTENSION DRAIN			
TOWNSHIP OF SOUTH DORCHESTER			
SCALE: AS SHOWN	APPROVED BY:	JOB NO.	DRAWN BY AK
DATE: JULY 23, 1976	F.B. D-66	76068	REVISED
PLAN & PROFILE			
A. M. SPRIET & ASSOCIATES LTD. CONSULTING ENGINEERS			DRAWING NUMBER 1