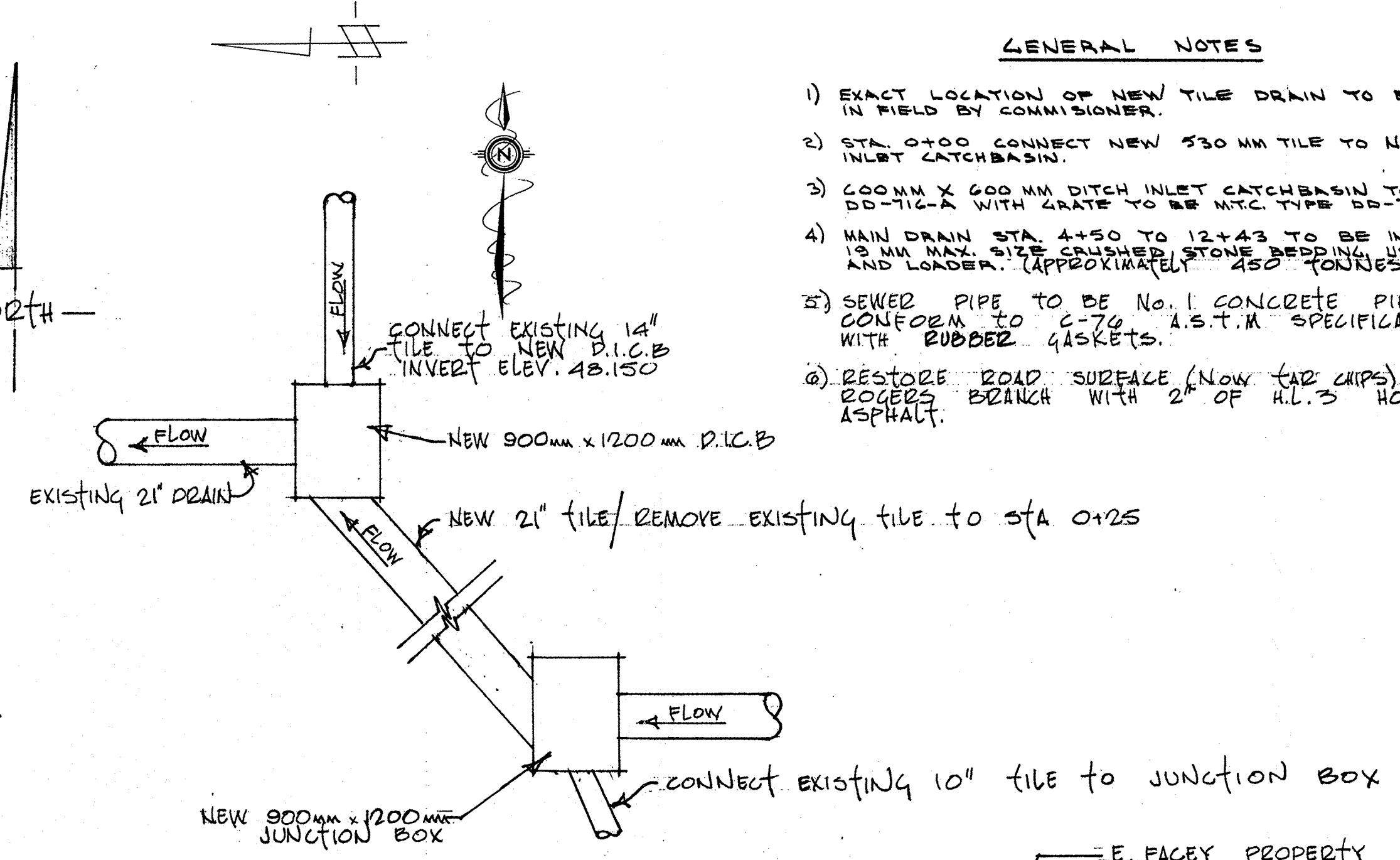


PLAN Scale: 1mm = 5,000mm (1cm = 50m)

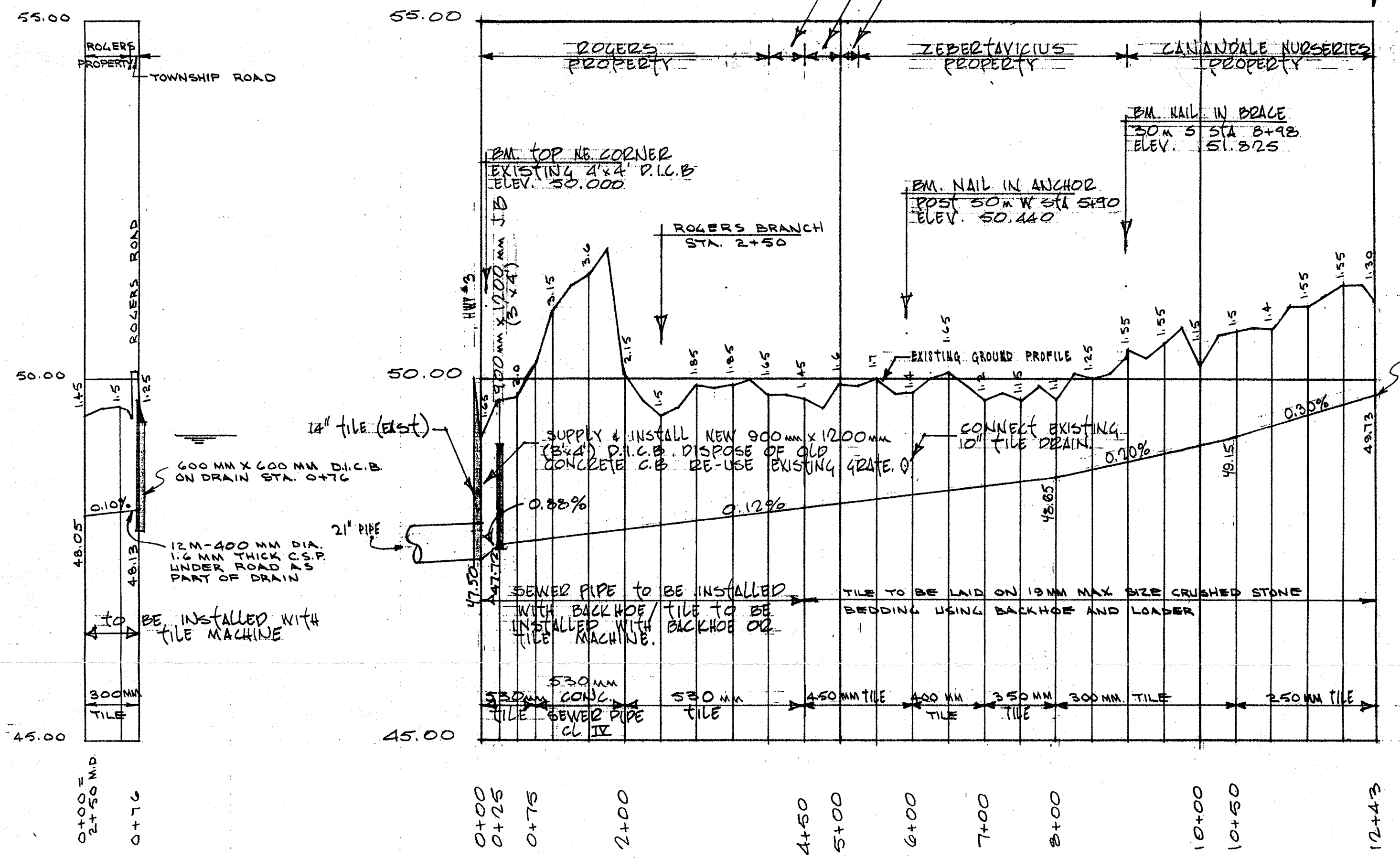
Lot LEGEND

ROLL No.	OWNER
1. 60-124-01	J. HARRIS
2. 60-125	R. LORCH
3. 60-131	W. PERCY
4. 60-133	M. HUTCHINSON
5. 60-134	"
6. 60-136	CANADALE NURSERIES
7. 60-137	W. LEWIS
8. 02-000-274	S. KLOOSTER
9. 02-000-273	J. WIEBE
10. 02-000-272	M. KOLEPA
11. 02-000-609-01	TOWN OF ALMER
12. 02-000-609-02	R. WILKINS
13. 02-000-610	G. STINA
14. 02-000-611	N. DYKHOORN
15. 02-000-612	A. VAN LINGEN
16. 02-000-613	R. WILKINS
17. 02-000-613-01	"
18. 02-000-614	T. DUDZISZ
19. 02-000-615	D. PEVRIES
20. 02-000-616	M. BREMER
21. 02-000-617	K. VAN LIEBE
22. 02-000-618	N. BROOKS
23. 02-000-619	VAN. QUER
24. 02-000-620	E. COOK
25. 02-000-621	J. MC CONNELL
26. 02-000-622	J. ELLEY
27. 02-000-623	L. CHARLTON
28. 60-106-02	M. CAUGHILL
29. 60-120-02	A. WIEBE
30. 60-120	W. CONNELL
31. 60-120-01	D. WILEY
32. 60-120-03	G. WIEBE
33. 60-106-01	G. BARBER
34. 60-107	L. TOTH
35. 60-108	K. SCHLECHT
36. 60-109	M. WEBER
37. 60-111	R. WIEBE
38. 60-112	J. LAUZON
39. 60-113-01	J. DICE CATERERS
40. 60-113-02	M. LINDEY



DETAIL "A" N.T.S.

- GENERAL NOTES**
- 1) EXACT LOCATION OF NEW TILE DRAIN TO BE VERIFIED IN FIELD BY COMMISSIONER.
 - 2) STA 0+00 CONNECT NEW 530 MM TILE TO NEW 3'x2' DITCH INLET CATCHBASIN.
 - 3) 600MM X 600MM DITCH INLET CATCHBASIN TO BE METC TYPE DD-T16-A WITH GRATE TO BE METC TYPE DD-T10.
 - 4) MAIN DRAIN STA 4+50 TO 12+43 TO BE INSTALLED ON 19MM MAX SIZE CRUSHED STONE BEDDING USING BACKHOE AND LOADER. (APPROXIMATELY 450 TONNES REQUIRED)
 - 5) SEWER PIPE TO BE NO. 1 CONCRETE PIPE TO CONFORM TO C-76 A.S.T.M SPECIFICATIONS WITH RUBBER GASKETS.
 - 6) RESTORE ROAD SURFACE (NOW TAR CHIPS) ON ROGERS BRANCH WITH 2" OF H.L.3 HOT LAID ASPHALT.



ROGERS BRANCH

MAIN DRAIN PROFILE Scale: Hor. 1mm = 5,000mm (1cm = 50m), Vert. 1mm = 50mm (1cm = 0.5m)

	FERGUSON DRAIN		
	TOWNSHIP OF MALAHIDE		
	Scale: METRIC	Approved By: F.B. B-45	JOB NO. 049193
	Date: JUNE 17, 80	Revised:	Drawn By: K.J.S.
PLAN & PROFILE			
SPRIET ASSOCIATES CONSULTING ENGINEERS		LONDON SUDBURY	Drawing Number